

General Assembly

UNIFE PLENARY

21 June 2017 | 16:00 – 18:00





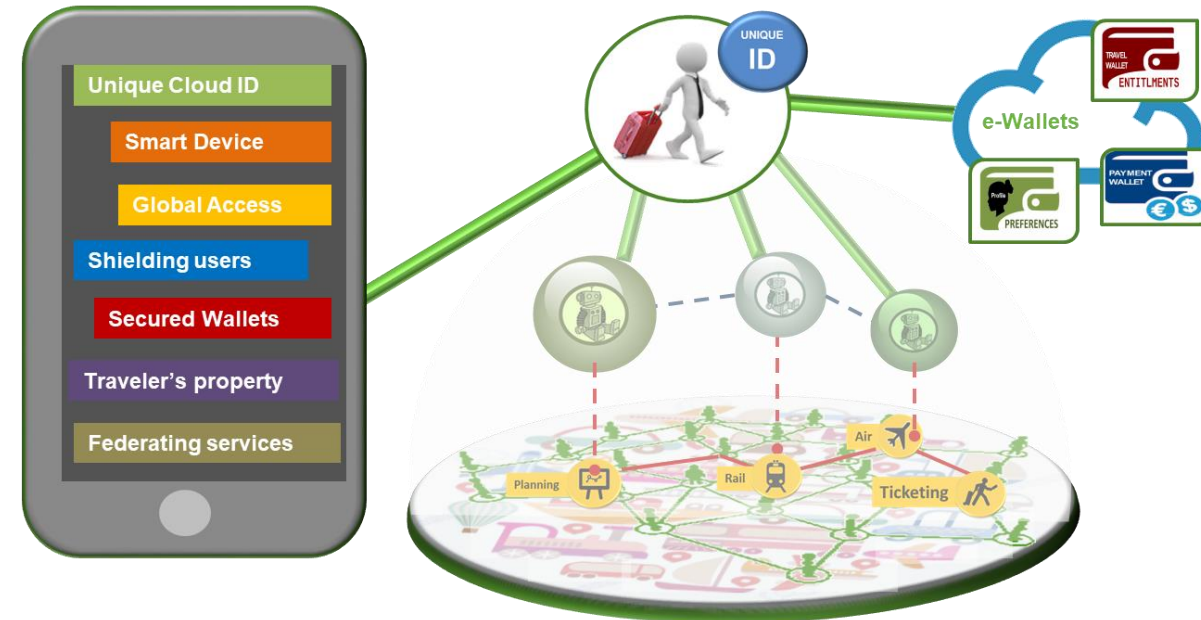
Summary of IT2Rail Project

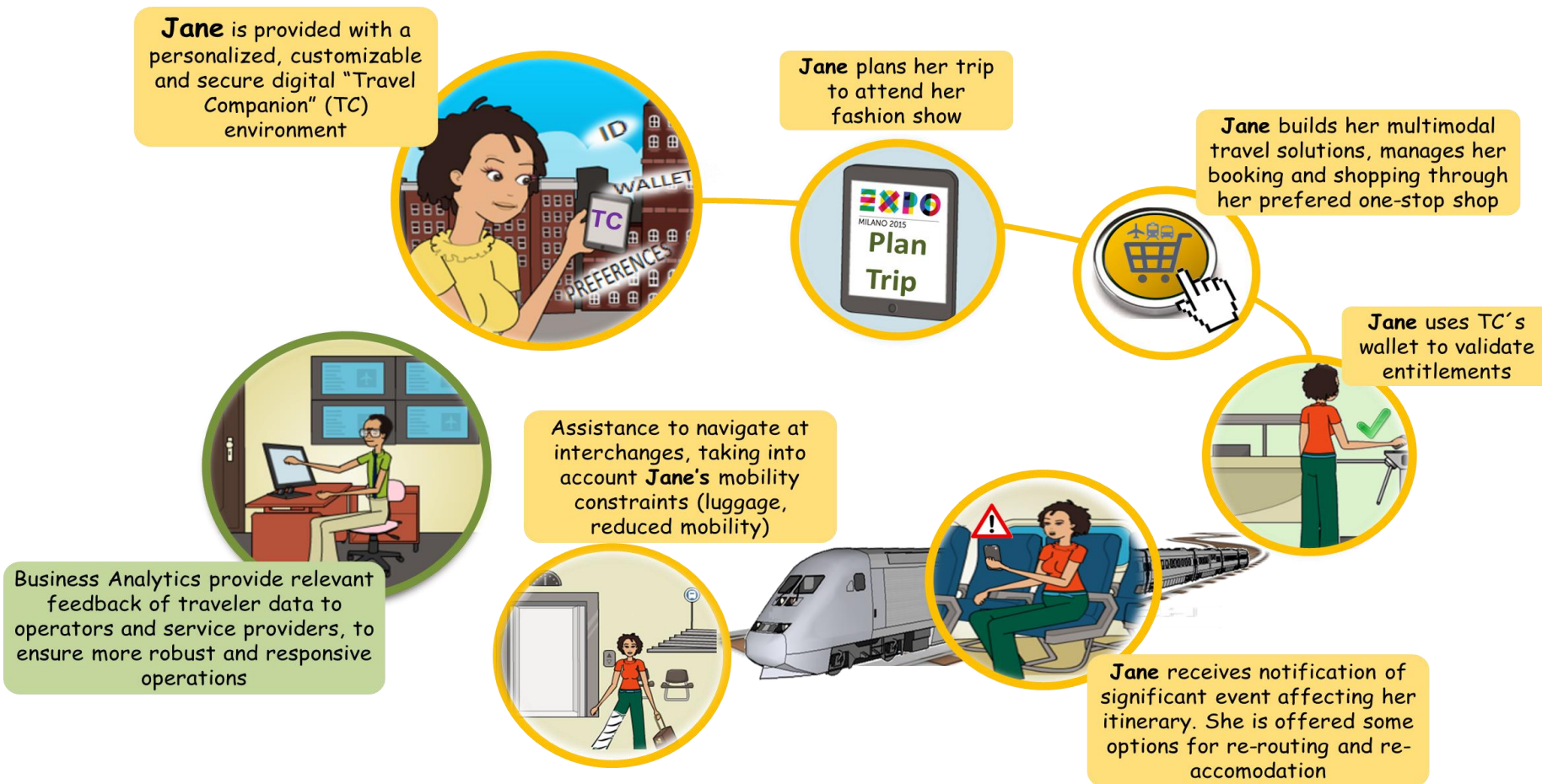
- ✓ 30 months **H2020** – to finish end of October 2017
- ✓ Project **budget**: 12€ million (100% EU funded)
- ✓ **Consortium** led by UNIFE composed by 27 partners
- ✓ All public **results** available at www.it2rail.eu
- ✓ **Shift2Rail Lighthouse** project focused on IT Solutions for Attractive Railway Services and therefore feeding directly into Shift2Rail Innovation Programme 4

The Main Objectives:

Integrate and demonstrate multimodal booking & ticketing functions integrating air, rail, coach, and urban services

- Interoperability: limit the integration costs of multiple service providers using existing but different standards and legacy systems
- Orchestrate the booking and purchase of co-modally retailed travel products/services





■ Open specifications

- ✓ Open interfaces for systems to interoperate
- ✓ Implementation-independent specifications
- ✓ Operating on a semantic graph of linked data
- ✓ Service oriented
- ✓ End-user centric
- ✓ Non-intrusive

■ Reference implementation

- ✓ Demonstration of concepts
- ✓ Single corridor, co-modal end-to-end solution
- ✓ Semantic technology